

# FICHE TECHNIQUE

## POUSOIR DE SOUPAPE

Groupe  
**01-01-06-00**

Exemple



Données client

Type machine : .....

Demande de prix

No. série machine : .....

Commande

CODE : TY-KL x D1 x D2 x L

TY-KL ..... Type de soupape à poussoir.

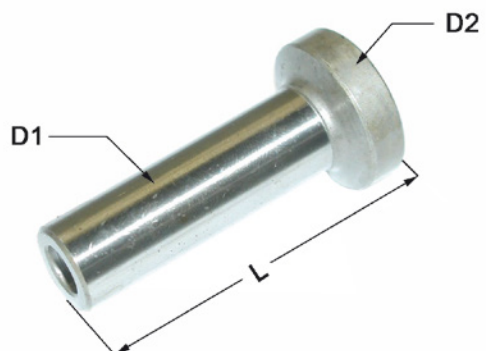
D1 ..... Diamètre, voir figure.

D2 ..... Diamètre, voir figure (si présent).

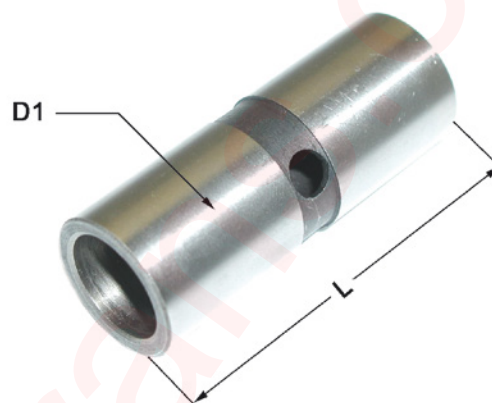
L ..... Longueur.

# SOUPAPE À POUSSOIR MÉCANIQUE

Type A



Type B



Type C



Type G

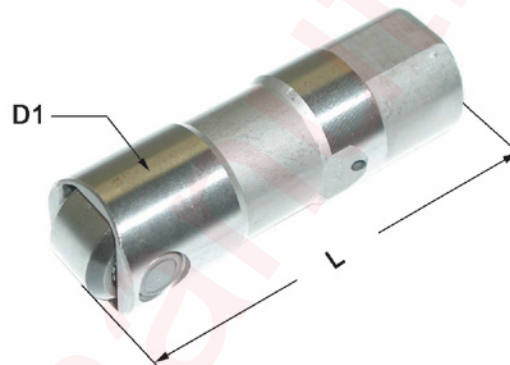


# SOUPAPE À POUSSOIR HYDRAULIQUE

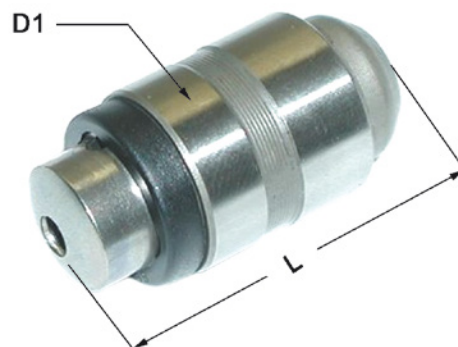
Type D



Type E



Type F



# TECHNICAL SHEET

## VALVE TAPPET

Group  
**01-01-06-00**

Example



Customer details

Type machine: .....

Price inquiry

Serial n° machine: .....

Order

CODE: TY-KL x D1 x D2 x L

TY-KL ..... Type of valve tappet.

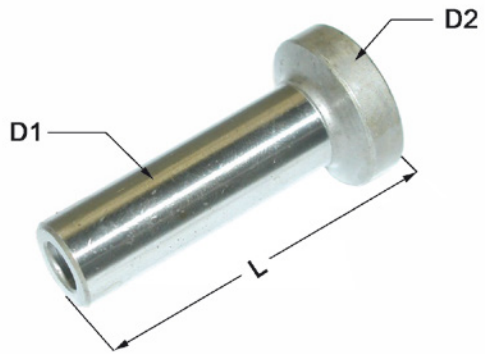
D1 ..... Diameter, see picture.

D2 ..... Diameter, see picture.

L ..... Length.

# MECHANICAL VALVE TAPPET

Type A



Type B



Type C



Type G



# HYDRAULICAL VALVE TAPPET

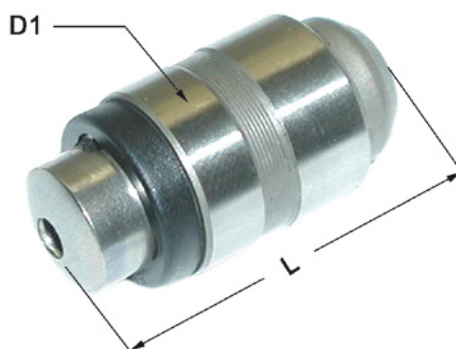
Type D



Type E



Type F



# TECHNISCHES DATENBLATT

## VENTILSTÖSSEL

Gruppe

**01-01-06-00**

Beispiel



Kundendaten

Maschinentyp: .....

Preis-anfrage

Serien-Nr. Maschine: .....

Bestellung

CODE: TY-KL x D1 x D2 x L

TY-KL ..... Ventilstößeltyp.

D1 ..... Durchmesser, siehe Figur.

D2 ..... Durchmesser, siehe Figur (wenn da).

L ..... Länge.



**MANUTRANS** SA

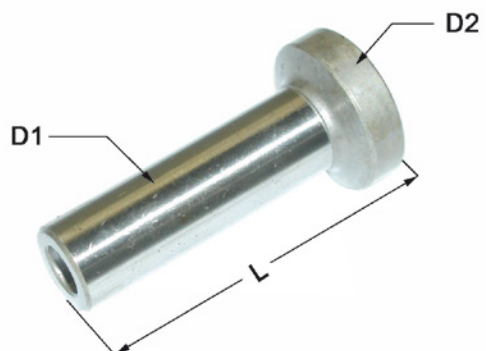
Fournitures pour engins de manutention

Manutrans SA  
Avenue de Lucens 44  
CH-1510 Moudon

Tél : +41 21 781 27 77  
Fax : +41 21 781 27 79  
info@manutrans.ch

# MECHANISCHE VENTILSTÖSSEL

Typ A



Typ B



Typ C



Typ G





# HYDRAULISCHE VENTILSTÖSSEL

Typ D



Typ E



Typ F

