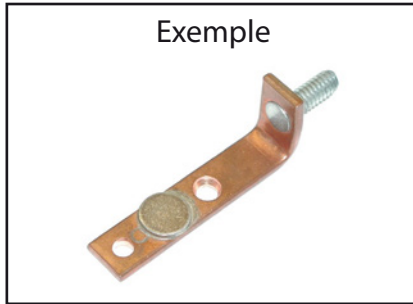


# FICHE TECHNIQUE

## CONTACT DE CONTACTEUR

Groupe  
**02-01-02-00**

Exemple



Données client

Type machine : ..... Demande de prix  
No. série machine : ..... Commande

CODE : TY-CT x AT-GA x AT-PL x AT-TI x AT-CT x L x L2 x L3 x D1 x D2 x B x TA x INC x MERK x TY-CR

TY-CT ..... Type de contact :

*Fixed*  
*Fixed assy*  
*Fixed back*  
*Moving*  
*Moving assy*  
*Special*  
*Stud*  
*Tip*

AT-GA..... Nombre de trous.

AT-PL ..... Nombre de plis.

AT-TI..... Nombre de pastilles.

AT-TC ..... Nombre de contacts.

L ..... Longueur totale du contact (mm).

L2..... Largeur de la pastille du contact (mm).

L3..... Longueur de la pastille du contact (mm).

D1 ..... Diamètre de la pastille du contact (mm).

D2 ..... Diamètre du plus petit trou (mm).

B..... Largeur totale (mm).

TA ..... Type de filetage, si présent.

INC..... Inclusif :

*V = ressort*

*P = plastic*

*H = hardware*

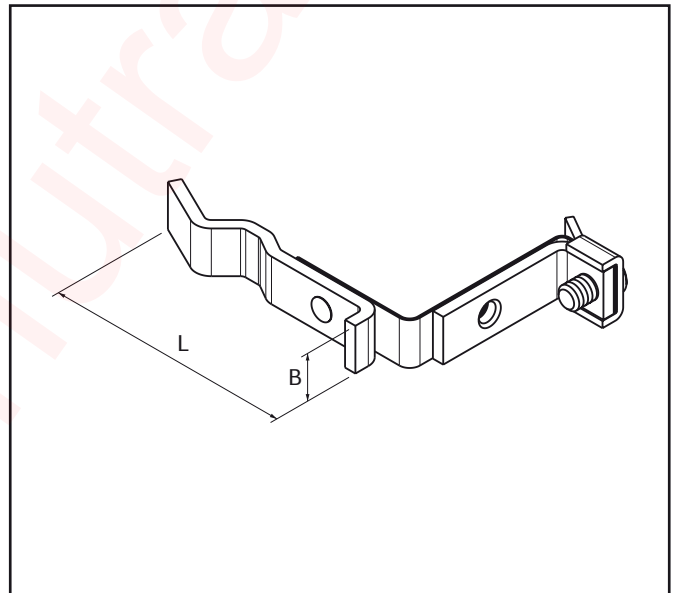
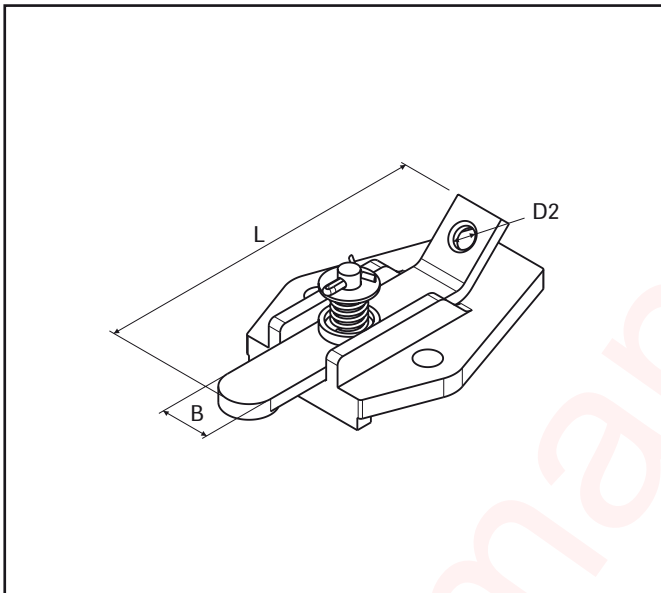
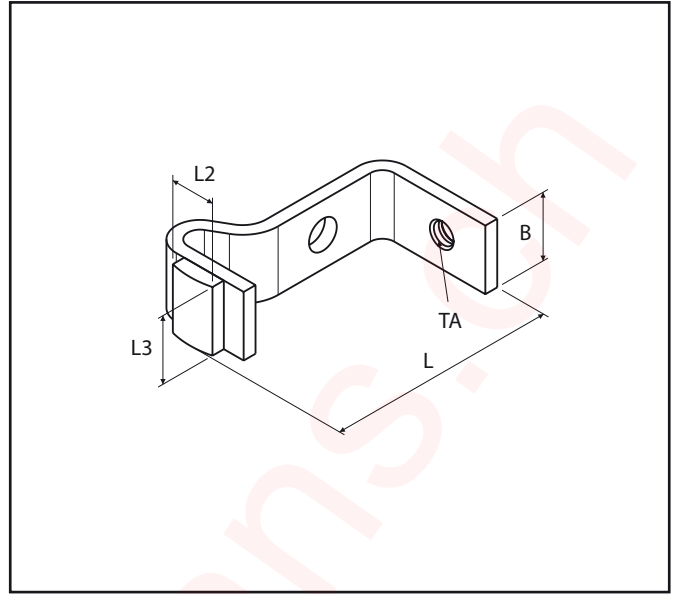
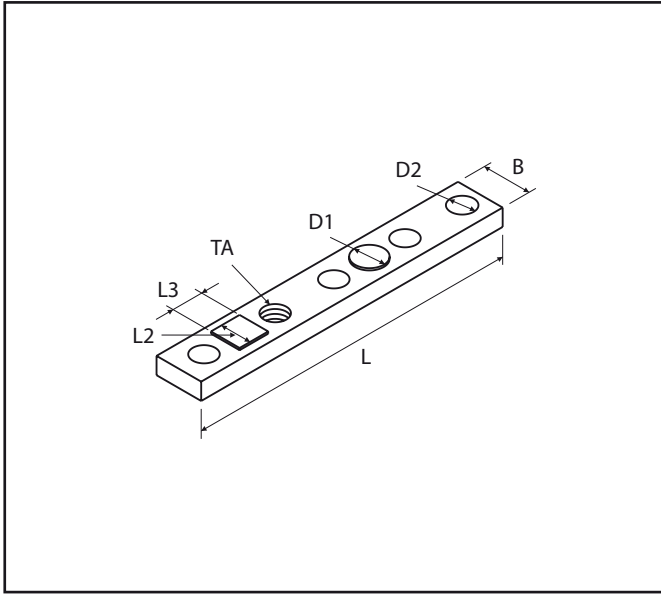
En cas de combinaison de plusieurs, nous les mettons par ordre.

p.ex. : PH = plastic et hardware.

MERK ..... Marque du contacteur.

TY-CR ..... Type contacteur.

## DIMENSIONS



# TECHNICAL SHEET

## CONTACT CONTACTOR

Group  
**02-01-02-00**

Example



Customer details

Type machine: .....

Price inquiry

Serial n° machine: .....

Order

CODE: TY-CT x AT-GA x AT-PL x AT-TI x AT-CT x L x L2 x L3 x D1 x D2 x B x TA x INC x MERK x TY-CR

TY-CT ..... Type of contact:

*Fixed*  
*Fixed assy*  
*Fixed back*  
*Moving*  
*Moving assy*  
*Special*  
*Stud*  
*Tip*

AT-GA..... Number of holes.

AT-PL ..... Number of curves.

AT-TI..... Number of tips.

AT-TC ..... Number of contacts.

L ..... Total length of contact (mm).

L2..... Width of tip (mm).

L3..... Length of tip (mm).

D1 ..... Diameter of contact tip (mm).

D2 ..... Diameter of the smallest hole (mm).

B..... Total width (mm).

TA ..... Thread type, if any.

INC..... Included:

*V = spring*  
*P = plastic*  
*H = hardware*

When combination, we put them in order.

E.g.: PH = plastic and hardware.

MERK ..... Contactor brand.

TY-CR ..... Contactor type.



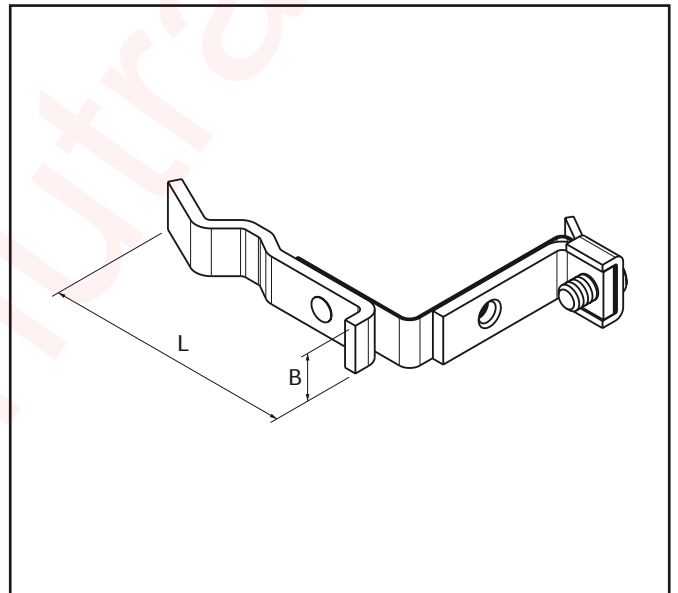
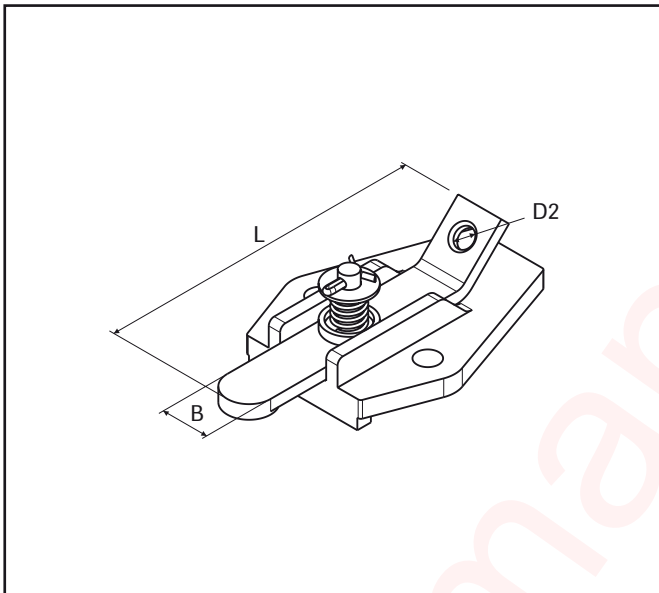
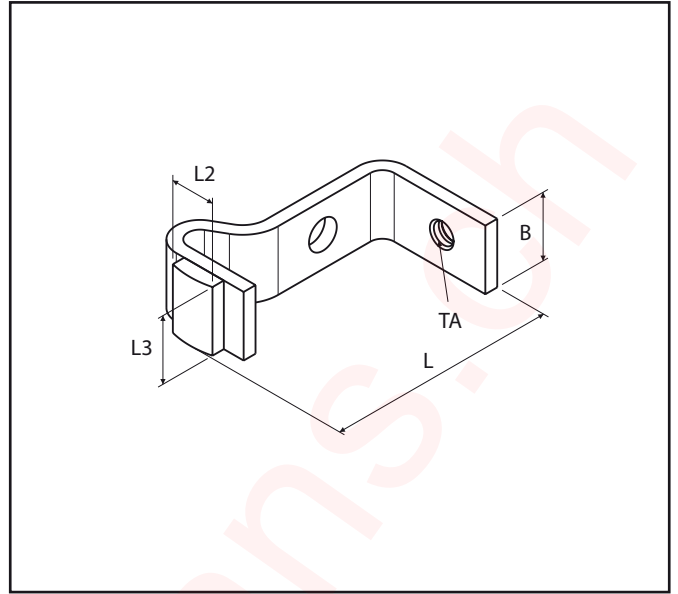
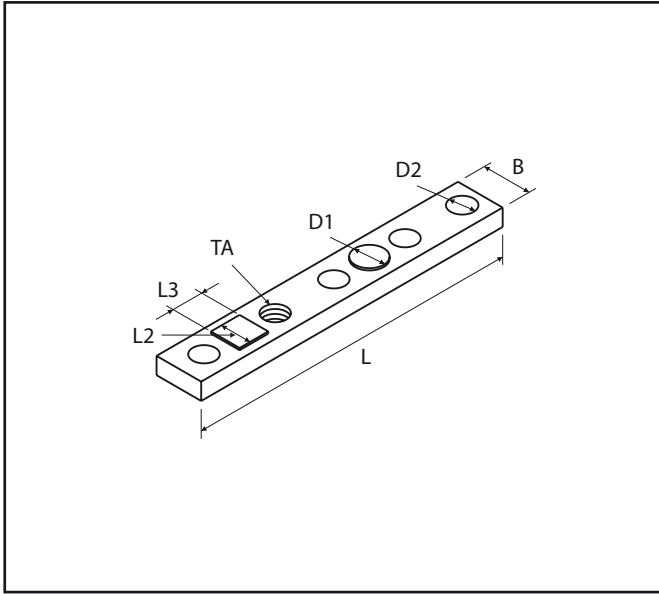
**MANUTRANS** SA

Fournitures pour engins de manutention

Manutrans SA  
Avenue de Lucens 44  
CH-1510 Moudon

Tél : +41 21 781 27 77  
Fax : +41 21 781 27 79  
info@manutrans.ch

## DIMENSIONS



# TECHNISCHES DATENBLATT

## RELAISKONTAKTE

Gruppe  
**02-01-02-00**

Beispiel



Kundendaten

Maschinentyp: .....

Preis-anfrage

Serien-Nr. Maschine: .....

Bestellung

CODE: TY-CT x AT-GA x AT-PL x AT-TI x AT-CT x L x L2 x L3 x D1 x D2 x B x TA x INC x MERK x TY-CR

TY-CT ..... Kontakttyp:

*Fixed*  
*Fixed assy*  
*Fixed back*  
*Moving*  
*Moving assy*  
*Special*  
*Stud*  
*Tip*

AT-GA..... Löcherzahl.

AT-PL ..... Rillenzahl.

AT-TI..... Faltenzahl.

AT-TC ..... Anzahl Kontakte.

L ..... Gesamtlänge des Kontaktes (mm).

L2..... Breite der Kontaktspitze (mm).

L3..... Länge der Kontaktspitze (mm).

D1 ..... Kontaktspitzendurchmesser (mm).

D2 ..... Durchmesser des kleinsten Loches (mm).

B..... Gesamtbreite (mm).

TA ..... Gewindetyp, wenn vorhanden.

INC..... Inklusive:

*V = Feder*  
*P = Plastik*  
*H = Hardware*

Bei Kombination von mehreren Kontakten, diese  
in Reihenfolge anordnen.  
Z.B. PH = Plastik und Hardware.

MERK ..... Relaismarke.

TY-CR ..... Relaistyp.

# ABMESSUNGEN

