

# FICHE TECHNIQUE

## CALORSTAT

Groupe  
**04-01-03-00**

Exemple



Données client

Type machine : .....

Demande de prix

No. série machine : .....

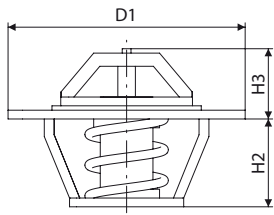
Commande

CODE : TY-TH x D1 x D2 x D3 x D4 x H1 x H2 x H3 x TE x AR x EX

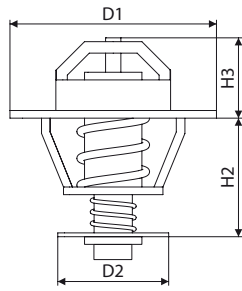
TY-TH ..... Type thermostat.  
D1 ..... Diamètre extérieur maximal.  
D2 ..... Diamètre valve By-Pass.  
D3 ..... Diamètre côté moteur.  
D4 ..... Diamètre côté radiateur.  
H1 ..... Hauteur totale.  
H2 ..... Hauteur côté moteur.  
H3 ..... Hauteur côté radiateur.  
TE..... Température d'ouverture.  
AR ..... Système de purge :  
    *JP = forage avec axe (jiggle pin)*  
    *BZP = forage sans axe*  
    *KR = avec encoche*  
    *Aucun*  
EX..... Excentration : OUI/NON.

# TYPES

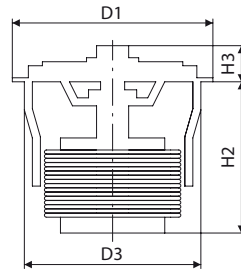
**Type A**



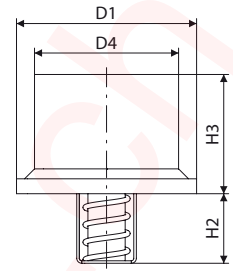
**Type B**



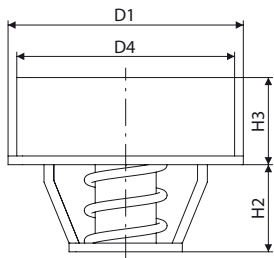
**Type C**



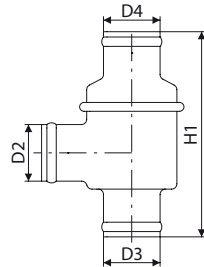
**Type D**



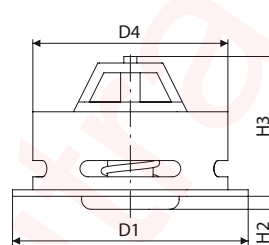
**Type E**



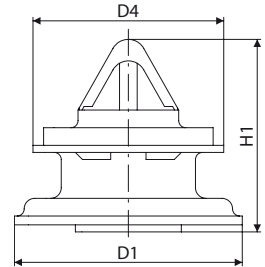
**Type F**



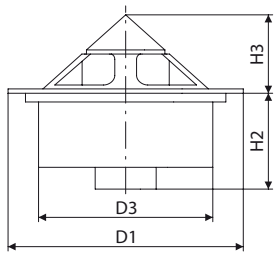
**Type G**



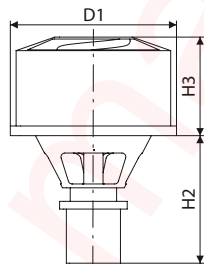
**Type H**



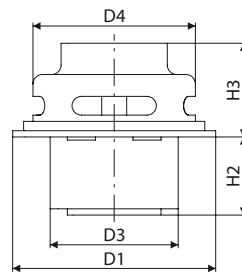
**Type I**



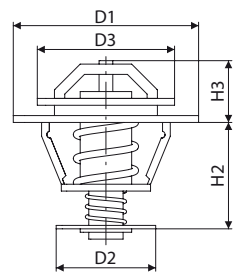
**Type J**



**Type K**



**Type L**



**Type S**

Autres types.

H1 = hauteur totale.  
D1 = diamètre extérieur maximal.

# TECHNICAL SHEET

## THERMOSTAT

Group  
**04-01-03-00**

Example



Customer details

Type machine: .....

Price inquiry

Serial n° machine: .....

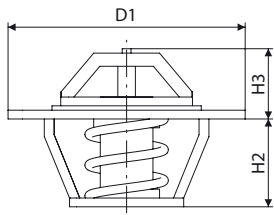
Order

CODE: TY-TH x D1 x D2 x D3 x D4 x H1 x H2 x H3 x TE x AR x EX

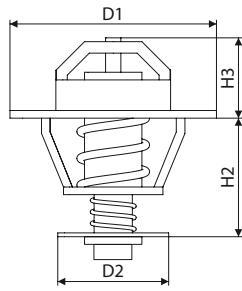
TY-TH ..... Type of thermostat.  
D1 ..... Maximum outer diameter.  
D2 ..... Bypass valve diameter.  
D3 ..... Diameter engine side.  
D4 ..... Diameter radiator side.  
H1 ..... Total height.  
H2 ..... Height engine side.  
H3 ..... Height radiator side.  
TE..... Opening temperature.  
AR ..... Air release system:  
    *JP = bore with pin (jiggle pin)*  
    *BZP = bore without pin*  
    *KR = with notch*  
    *None*  
EX..... Eccentric: YES/NO.

## TYPES

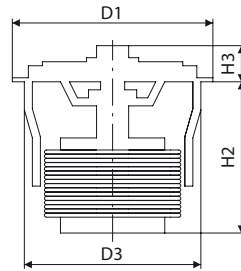
**Type A**



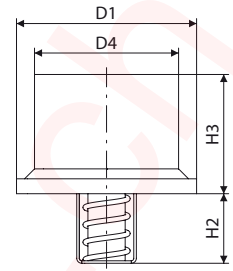
**Type B**



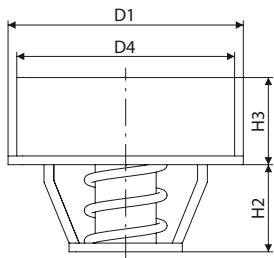
**Type C**



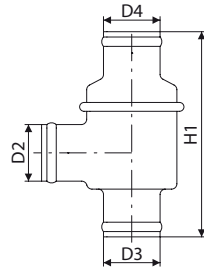
**Type D**



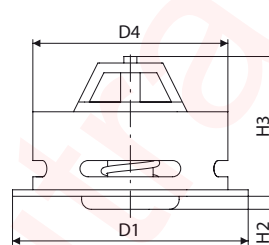
**Type E**



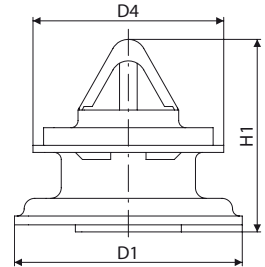
**Type F**



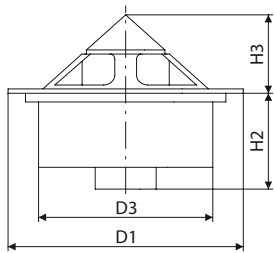
**Type G**



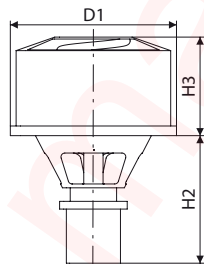
**Type H**



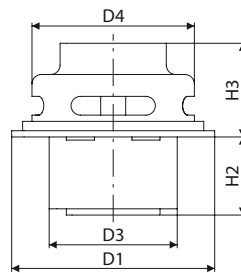
**Type I**



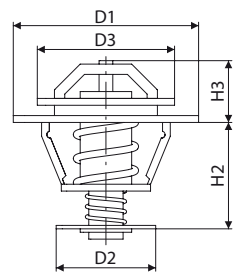
**Type J**



**Type K**



**Type L**



**Type S**

None of previous types.

H1 = total height.  
D1 = maximum outer diameter.

# TECHNISCHES DATENBLATT

## THERMOSTAAT

Gruppe  
**04-01-03-00**

Beispiel



Kundendaten

Maschinentyp: .....

Preis-anfrage

Serien-Nr. Maschine: .....

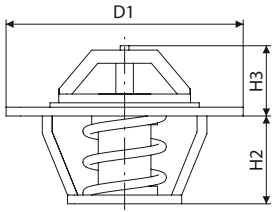
Bestellung

CODE: TY-TH x D1 x D2 x D3 x D4 x H1 x H2 x H3 x TE x AR x EX

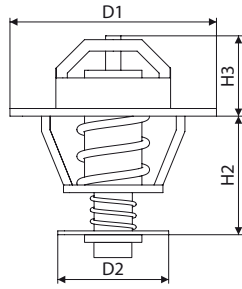
TY-TH ..... Typ Thermostat.  
D1 ..... Maximaler Aussendurchmesser.  
D2 ..... Bypass Klappendurchmesser.  
D3 ..... Durchmesser Motorseite.  
D4 ..... Durchmesser Kühlerseite.  
H1 ..... Gesamthöhe.  
H2 ..... Höhe Motorseite.  
H3 ..... Höhe Kühlerseite.  
TE ..... Öffnungstemperatur.  
AR ..... Entlüftungssystem (air release):  
    *JP = Bohrung mit Pin (jiggle pin)*  
    *BZP = Bohrung ohne Pin*  
    *KR = mit Kerbe*  
    *Keine*  
EX ..... Exzentrizität: JA/NEIN.

# TYPEN

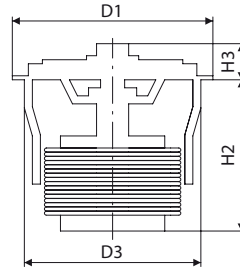
**Typ A**



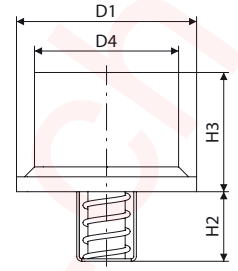
**Typ B**



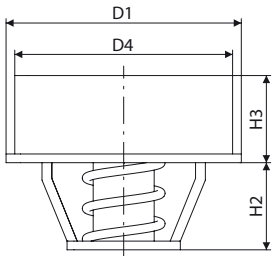
**Typ C**



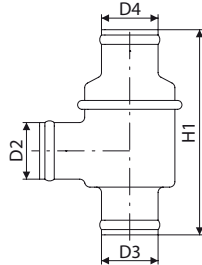
**Typ D**



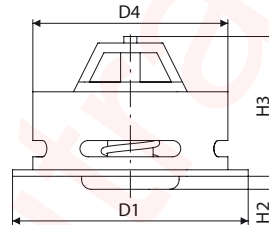
**Typ E**



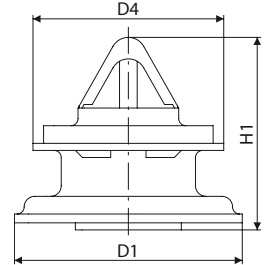
**Typ F**



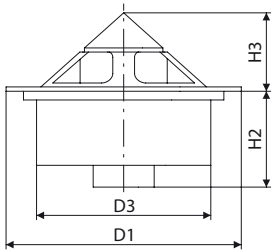
**Typ G**



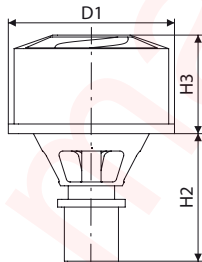
**Typ H**



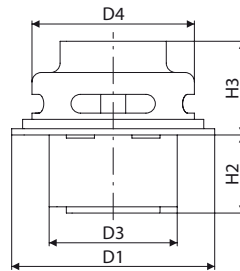
**Typ I**



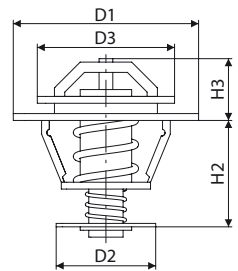
**Typ J**



**Typ K**



**Typ L**



**Typ S**

Keiner der vorigen Typen.

H1 = Gesamthöhe.  
D1 = maximaler  
Aussendurchmesser.



**MANUTRANS SA**

Fournitures pour engins de manutention

Manutrans SA  
Avenue de Lucens 44  
CH-1510 Moudon

Tél : +41 21 781 27 77  
Fax : +41 21 781 27 79  
info@manutrans.ch