

FICHE TECHNIQUE

CROISILLON DE CARDAN

Groupe
07-02-02-00

Exemple



Données client

Type machine :

Demande de prix

No. série machine :

Commande

CODE : TY x L1 x L2 x C x D1 x B x D2 x TA x Pm x Pi x RH/LH x SMP

TY..... Type de croisillon.

L1..... Longueur (voir figures).

L2..... Longueur sur bords finis (voir figures).

C..... Entraxe.

D1..... Diamètre (voir figures).

B..... Largeur de la clavette.

D2..... Diamètre (voir figures).

TA..... Type de filetage.

Pm..... Pas métrique.

Pi..... Pas en pouce.

RH/LH..... Filetage droit (RH)/gauche (LH).

SMP..... Graisseur :
G = aucun
V = prévu
A = présent



MANUTRANS SA
Fournitures pour engins de manutention

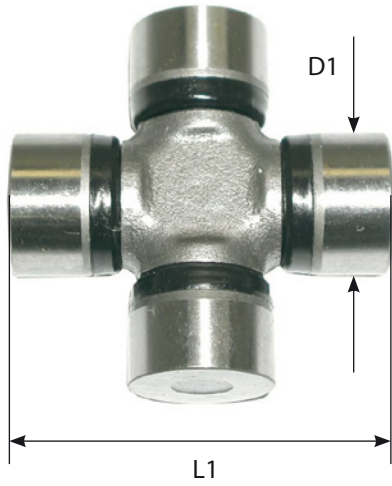
Manutrans SA
Avenue de Lucens 44
CH-1510 Moudon

Tél : +41 21 781 27 77
Fax : +41 21 781 27 79
info@manutrans.ch

TYPES

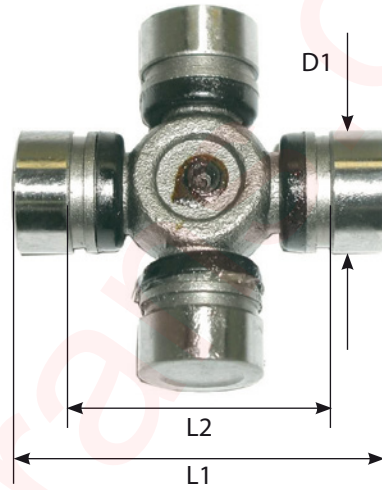
TYPE A

Sans clavette – sans circlips



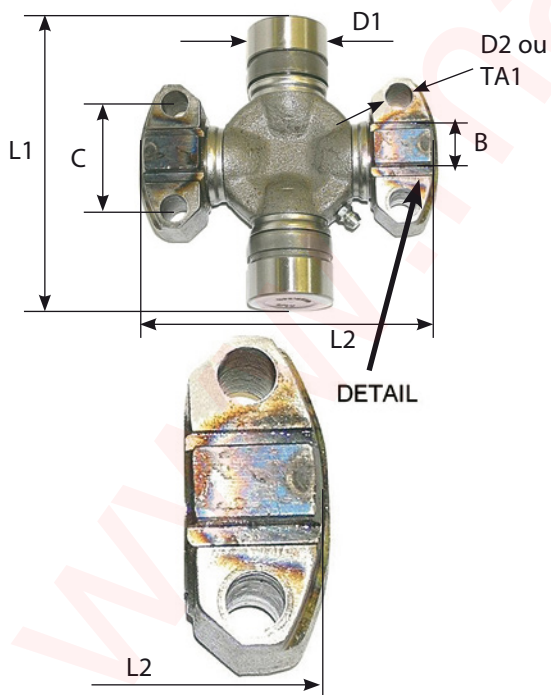
TYPE B

Sans clavette – avec circlips



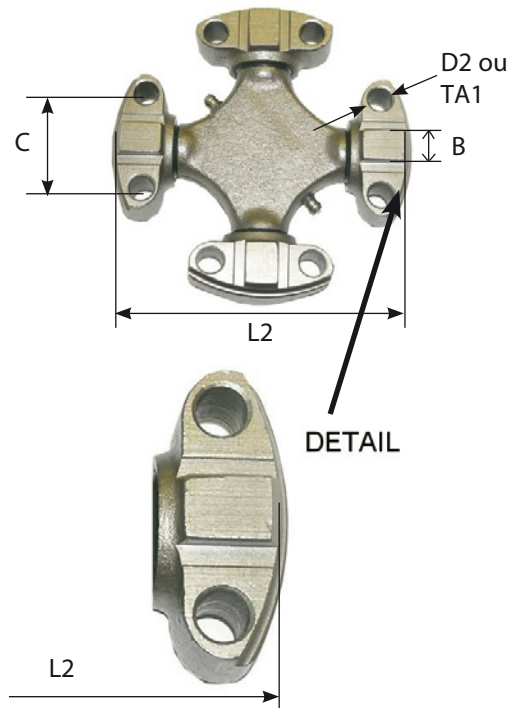
TYPE C

Avec 2 clavettes



TYPE D

Avec 4 clavettes



TECHNICAL SHEET

UNIVERSAL JOINT (CROSS)

Group
07-02-02-00



Customer details

Type machine:

Price inquiry

Serial n° machine:

Order

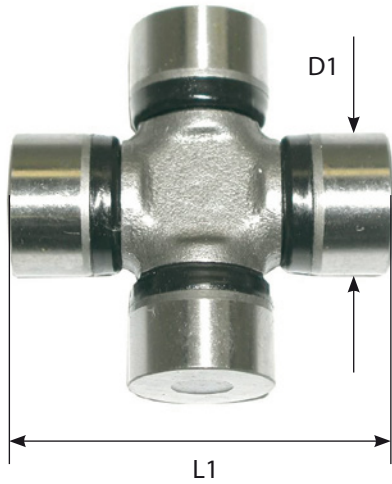
CODE: TY x L1 x L2 x C x D1 x B x D2 x TA x Pm x Pi x RH/LH x SMP

- TY..... Type of universal joint (see types).
- L1..... Length (see figure).
- L2..... Length between edge of turned sections (see figure).
- C..... Centre distance.
- D1 Diameter (see figure).
- B..... Width of the key.
- D2 Diameter (see figure).
- TA Thread type.
- Pm..... Step (mm).
- Pi Step (inch).
- RH/LH..... RH or LH thread.
- SMP..... Grease nipple:
 - G = none
 - V = optional
 - A = present

TYPES

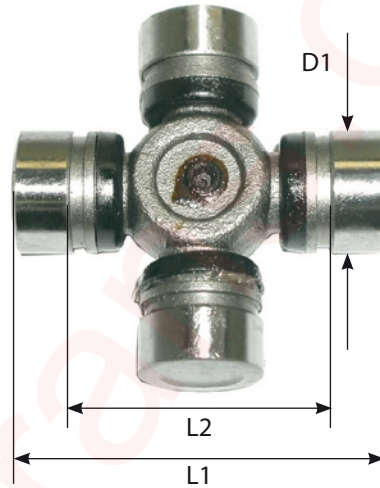
TYPE A

No key spline – no circlips groove



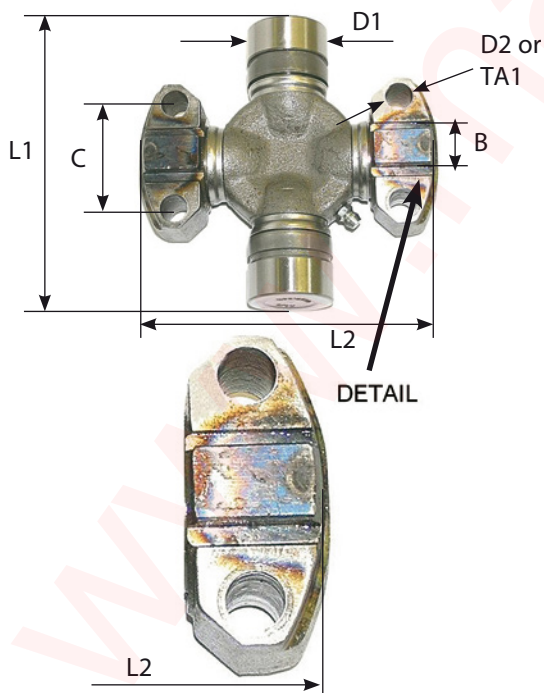
TYPE B

No key spline – with circlips groove



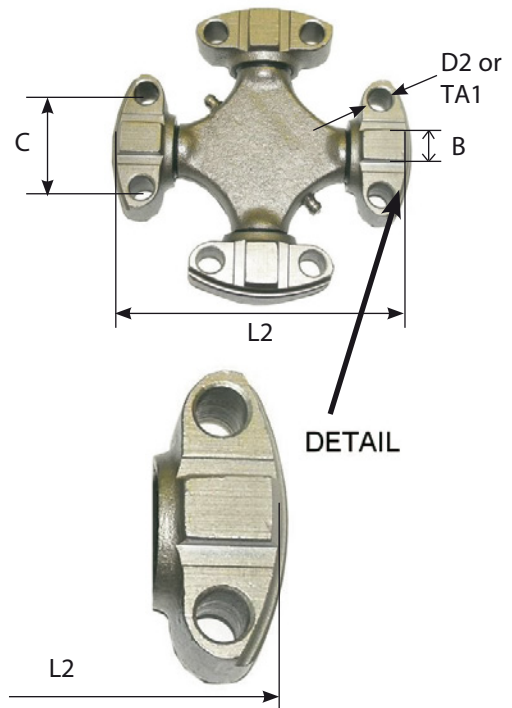
TYPE C

With 2 key splines



TYPE D

With 4 key splines



TECHNISCHES DATENBLATT

KARDANKREUZ

Gruppe
07-02-02-00

Beispiel



Kundendaten

Maschinentyp:

Preis Anfrage

Serien-Nr. Maschine:

Bestellung

CODE: TY x L1 x L2 x C x D1 x B x D2 x TA x Pm x Pi x RH/LH x SMP

TY..... Typ Kardankreuz (siehe Typen).

L1..... Länge (siehe Abbildung).

L2..... Länge auf dem abgedrehten Rande (siehe Abbildung).

C..... Zenterabstand.

D1..... Durchmesser (siehe Abbildung).

B..... Breite des Keils.

D2..... Durchmesser (siehe Abbildung).

TA..... Gewindetyp.

Pm..... Mm.

Pi..... Zoll.

RH/LH..... Rechtes oder linkes Gewinde.

SMP..... Schmiernippel:

G = Keiner

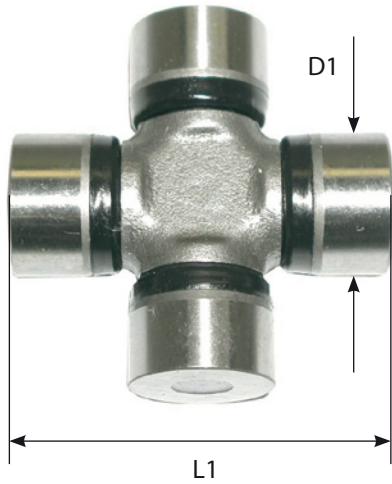
V = Vorgesehen

A = Vorhanden

TYPEN

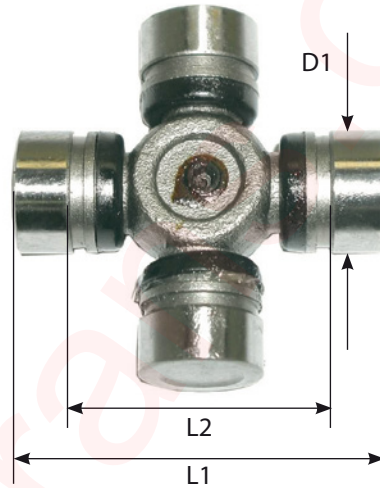
TYP A

Ohne Keilnut – ohne Circlipschraube



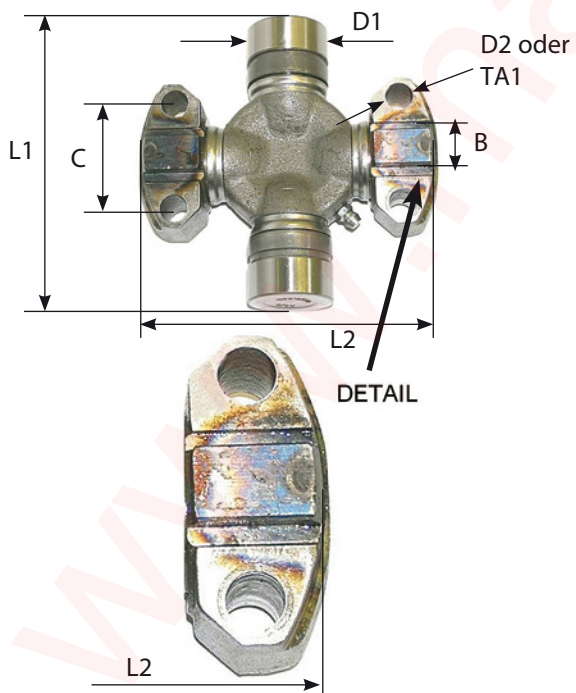
TYP B

Ohne Keilnut – mit Circlipschraube



TYP C

Mit 2 Keilnuten



TYP D

Mit 4 Keilnuten

