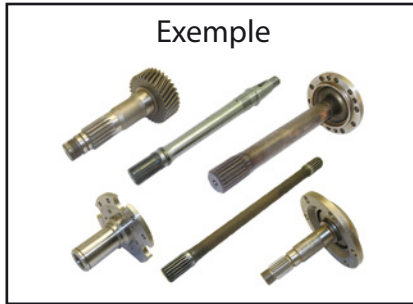


# FICHE TECHNIQUE

## DEMI ARBRE

Groupe  
**07-04-03-00**

Exemple



Données client

Type machine : .....

Demande de prix

No. série machine : .....

Commande

CODE : TY x L x AC x D x AT-TA x AC1 x D1 x AT-BG x TA-UIT x Pm x Pi

TY..... Type, voir figures.

L..... Longueur, voir figures (mm).

AC..... Nombre de cannelures max., voir figures.

D..... Diamètre, voir figures (mm).

AT-TA..... Nombre de dents (uniquement pour le type CG).

AC1..... Nombre de cannelures min., voir figures.

D1..... Diamètre, voir figures (mm).

AT-BG..... Nombre de trous de fixation, voir figures.

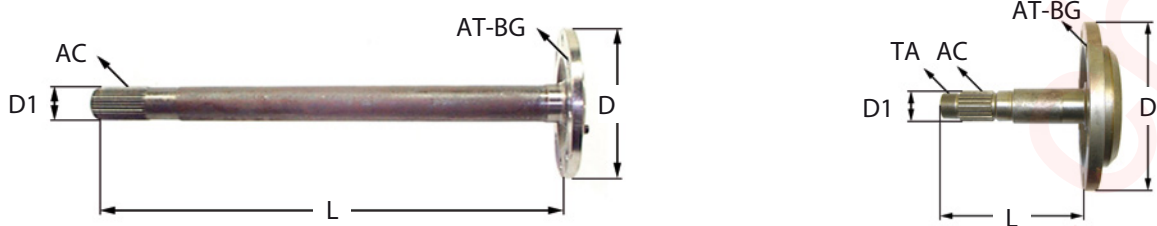
TA-UIT..... Filetage extérieur (si présent).

Pm..... Pas métrique.

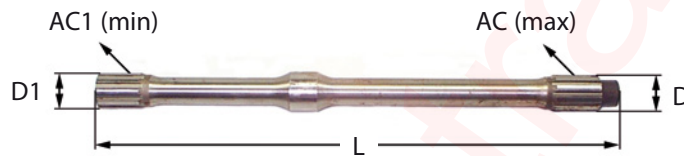
Pi..... Pas par pouce.

# DIMENSIONS

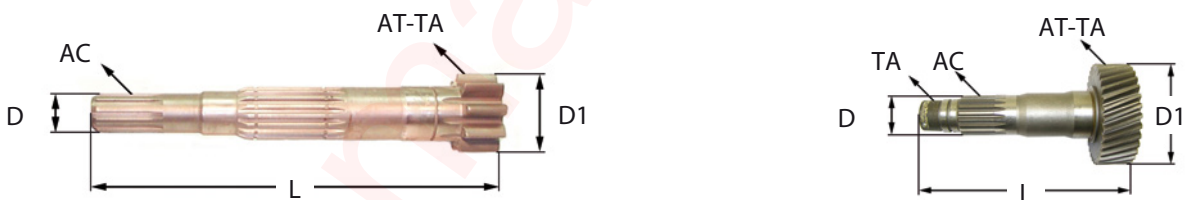
**Type CF**  
Cannelures – bride



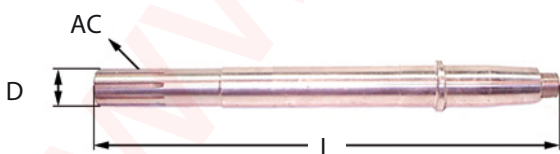
**Type CC**  
Cannelures – cannelures



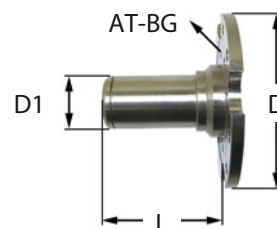
**Type CG**  
Cannelures – pignon



**Type CK**  
Cannelures – cone



**Type SF**  
Spécial – bride

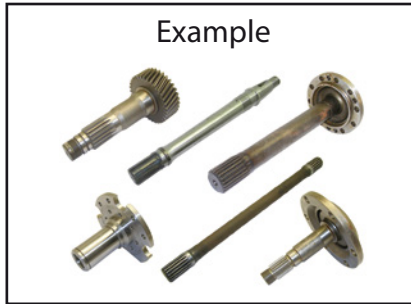


# TECHNICAL SHEET

## AXLE SHAFT

Group  
**07-04-03-00**

Example



Customer details

Type machine: .....

Price inquiry

Serial n° machine: .....

Order

CODE: TY x L x AC x D x AT-TA x AC1 x D1 x AT-BG x TA-UIT x Pm x Pi

TY..... Type, see pictures.

L..... Length, see pictures (mm).

AC..... Maximum number of grooves, see pictures.

D..... Diameter, see pictures (mm).

AT-TA..... Number of teeth (only for type CG).

AC1..... Minimum number of grooves, see pictures.

D1..... Diameter, see pictures (mm).

AT-BG..... Number of mounting holes, see figures.

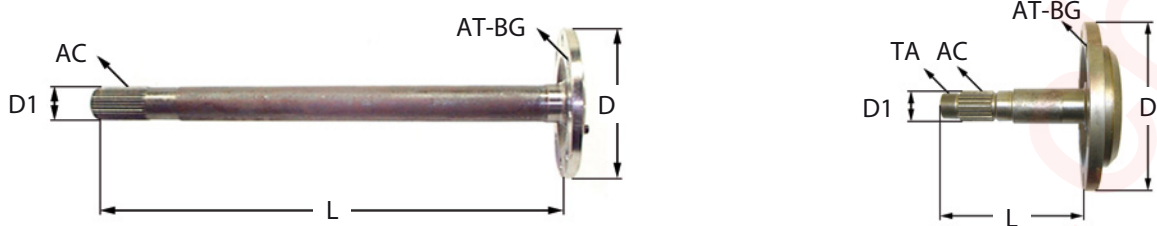
TA-UIT..... External thread, if present.

Pm..... Pitch metric.

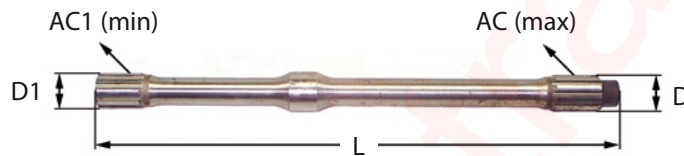
Pi..... Pitch imperial.

# DIMENSIONS

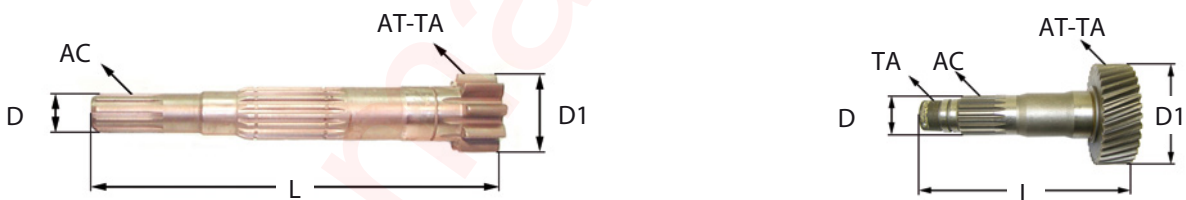
**Type CF**  
Grooves – flange



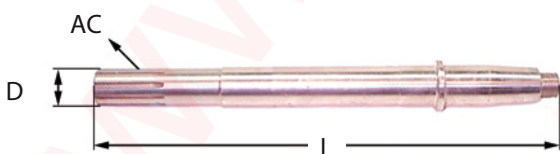
**Type CC**  
Grooves – grooves



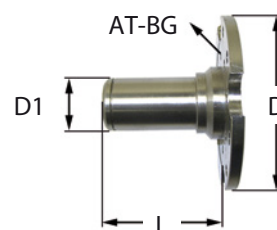
**Type CG**  
Grooves – gear



**Type CK**  
Grooves – cone



**Type SF**  
Special – flange



# TECHNISCHES DATENBLATT

## ANTRIEBSWELLE

Gruppe  
**07-04-03-00**



Kundendaten

Maschinentyp: .....

Preis-anfrage

Serien-Nr. Maschine: .....

Bestellung

CODE: TY x L x AC x D x AT-TA x AC1 x D1 x AT-BG x TA-UIT x Pm x Pi

TY..... Typ, siehe Bilder.

L..... Länge, siehe Bilder (mm).

AC..... Max. Rillenzahl, siehe Bilder.

D..... Durchmesser, siehe Bilder (mm).

AT-TA..... Anzahl Zähne (nur beim CG Typ).

AC1..... Min. Rillenzahl, siehe Bilder.

D1..... Durchmesser, siehe Bilder (mm).

AT-BG..... Anzahl Befestigungslöcher, siehe Abbildungen.

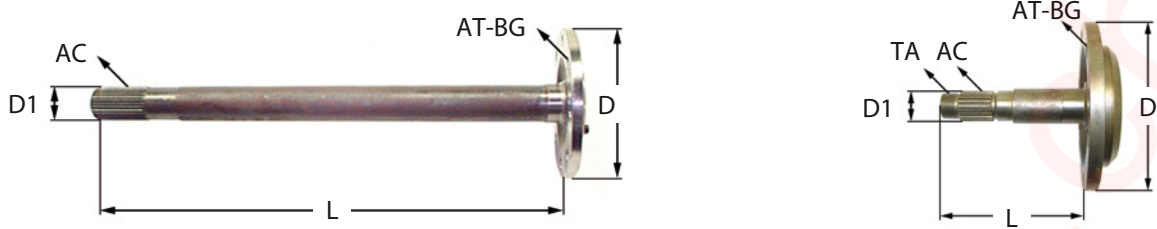
TA-UIT..... Aussengewinde, falls vorhanden.

Pm..... Mass metrisch.

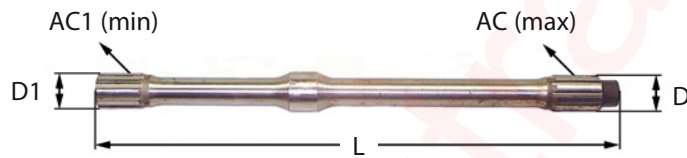
Pi..... Mass in Zoll.

# ABMESSUNGEN

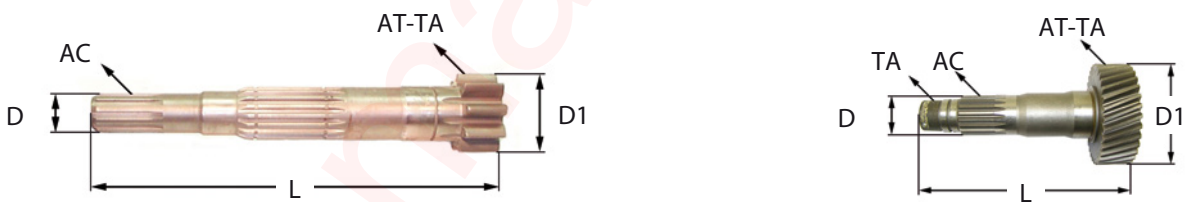
**Typ CF**  
Rillen – Flansch



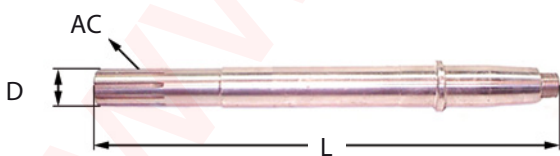
**Typ CC**  
Rillen – Rillen



**Typ CG**  
Rillen – Zahnrad



**Typ CK**  
Rillen – Kone



**Typ SF**  
Speziell – Flansch

