

# FICHE TECHNIQUE

## CHAPES DIVERSES SANS ROTULES

Groupe  
**18-06-11-02**



Données client

Type machine : .....

Demande de prix

No. série machine : .....

Commande

CODE : TY x SCH x L1 x D1 x D2 x B1 x B2 X TA x Pm x Pi x RH/LH x L2 x SMP

TY..... Type de chapes (voir types).

SCH..... Filetage :

*I = intérieur*

*U = extérieur*

*Z = sans filetage*

L1..... Voir schéma.

D1..... Voir schéma.

D2..... Voir schéma.

B1..... Voir schéma.

B2..... Voir schéma.

TA..... Type de filetage.

Pm..... Métrique.

Pi..... Pouce.

RH/LH..... Filet à droite, à gauche.

L2..... Longueur du filet.

SMP..... Graisseur :

*G = sans*

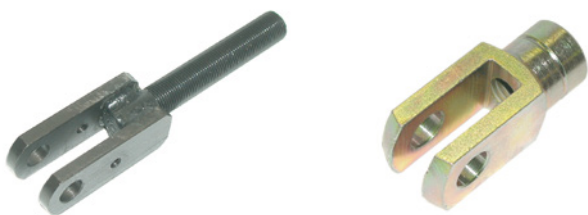
*V = prévu*

*A = présent*

## TYPES

### Type A

Chape en U sans extrémité fendue



### Type B

Chape en U avec extrémité fendue



### Type C

Chape cylindrique sans extrémité fendue



### Type D

Chape cylindrique avec extrémité fendue



### Type E

Rotule



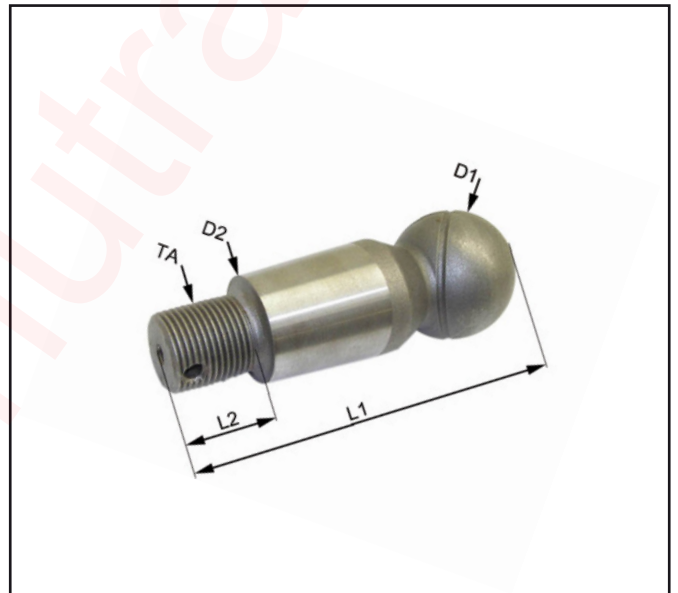
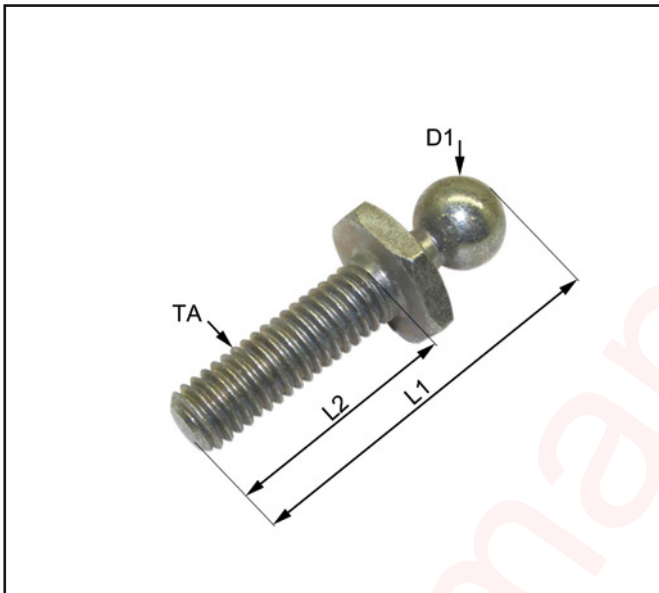
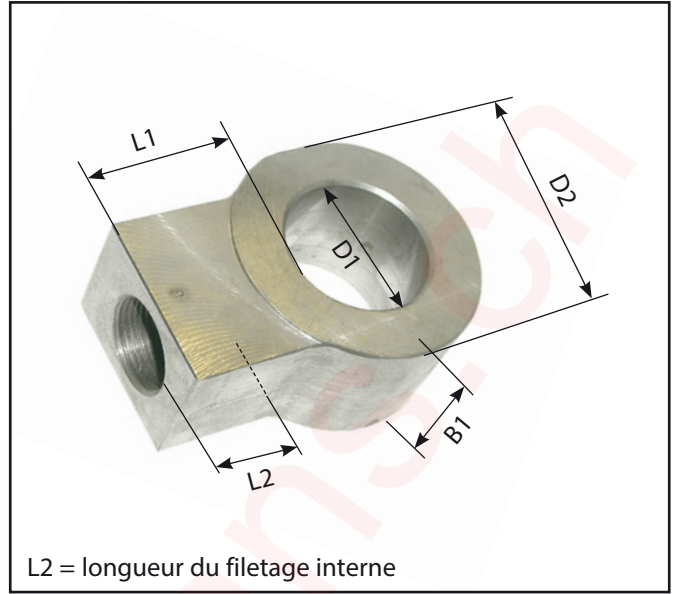
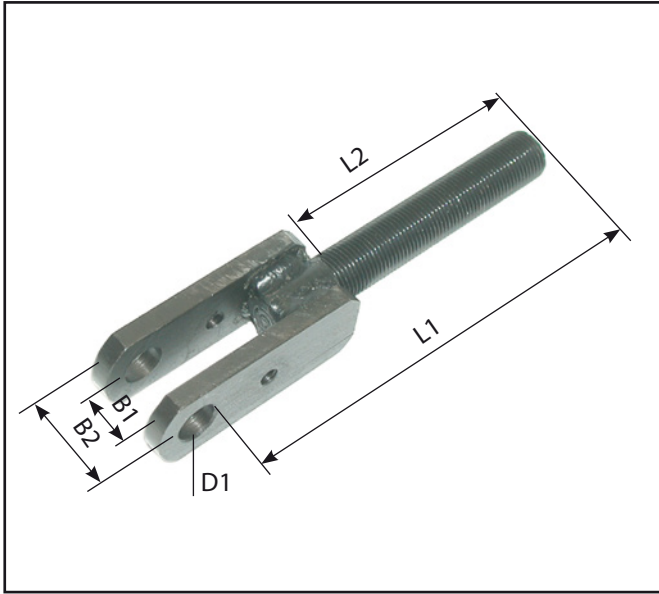
**MANUTRANS** SA

Fournitures pour engins de manutention

Manutrans SA  
Avenue de Lucens 44  
CH-1510 Moudon

Tél : +41 21 781 27 77  
Fax : +41 21 781 27 79  
info@manutrans.ch

## DIMENSIONS

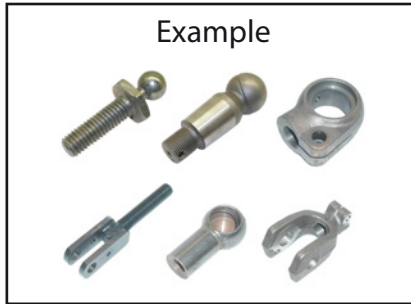


# TECHNICAL SHEET

## ROD END WITHOUT SPHERICAL BEARING

Group  
**18-06-11-02**

Example



Customer details

Type machine: .....

Price inquiry

Serial n° machine: .....

Order

CODE: TY x SCH x L1 x D1 x D2 x B1 x B2 X TA x Pm x Pi x RH/LH x L2 x SMP

TY..... Type of rod end (see types).

SCH..... Thread type:

*I = internal*

*U = external*

*Z = without thread*

L1..... See picture.

D1..... See picture.

D2..... See picture.

B1..... See picture.

B2..... See picture.

TA..... Thread type.

Pm..... Pitch metric.

Pi..... Pitch per inch.

RH/LH..... Right-hand thread / left-hand thread.

L2..... Thread length.

SMP..... Grease nipple:

*G = none*

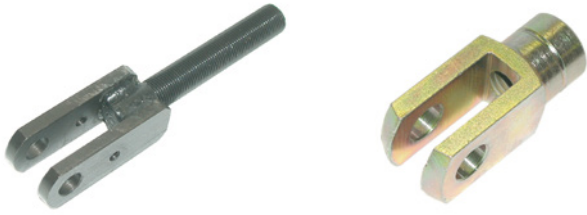
*V = optional*

*A = present*

## TYPES

### Type A

Yoke end without groove



### Type B

Yoke end with groove



### Type C

Thread end without groove



### Type D

Thread end with groove

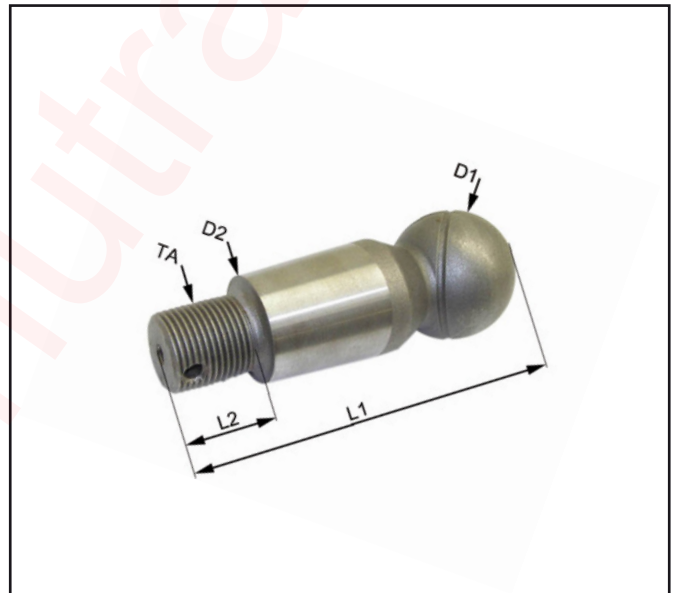
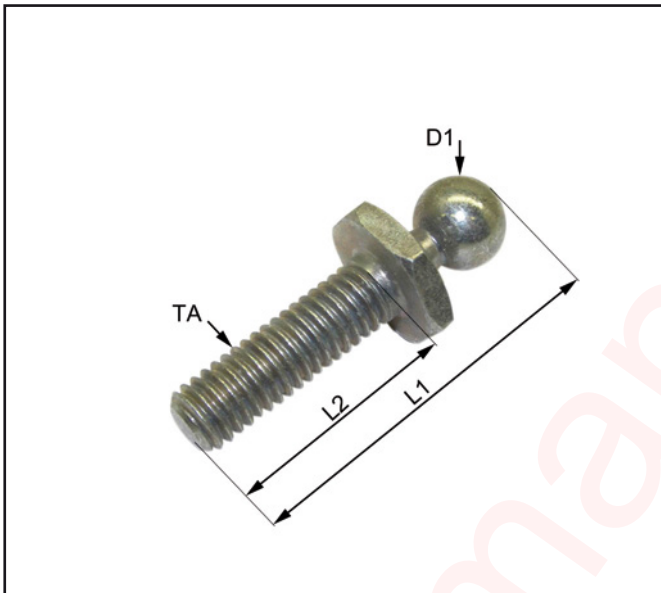
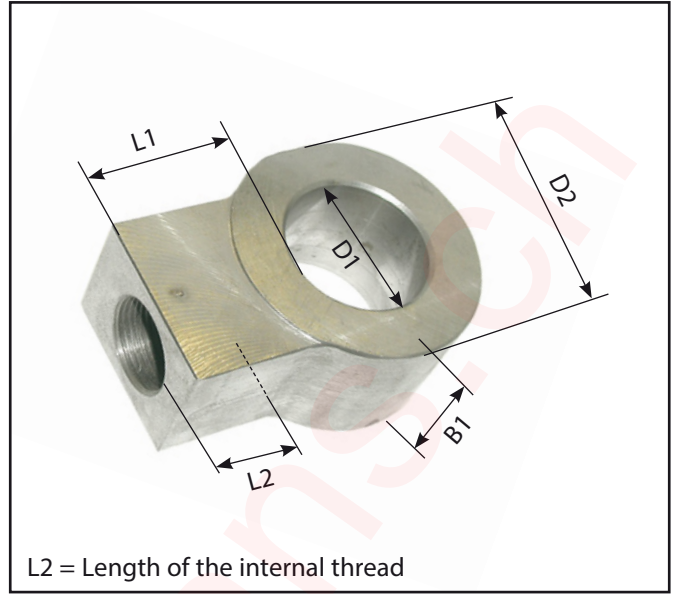
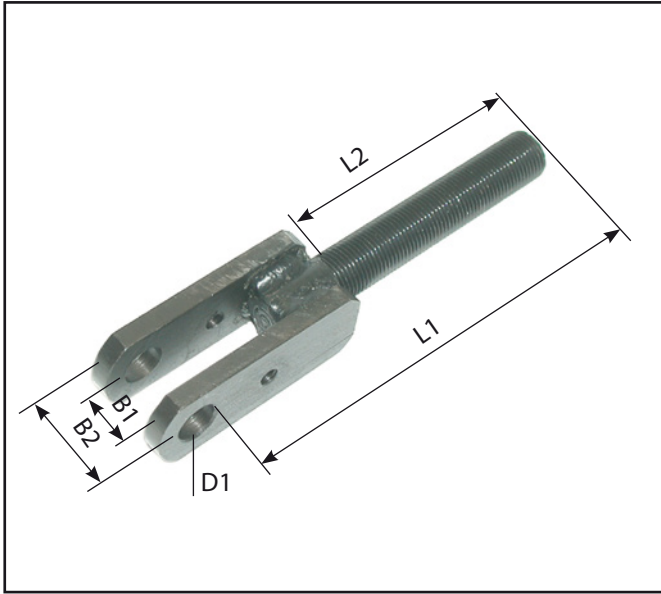


### Type E

Ball



## DIMENSIONS



# TECHNISCHES DATENBLATT

## ENDSTÜCK

Gruppe  
**18-06-11-02**

Beispiel



Kundendaten

Maschinentyp: .....

Preis-anfrage

Serien-Nr. Maschine: .....

Bestellung

CODE: TY x SCH x L1 x D1 x D2 x B1 x B2 X TA x Pm x Pi x RH/LH x L2 x SMP

TY..... Typ Kugelgelenk (siehe Typen).

SCH..... Schraubengewinde:

*I = Innenmaß*

*U = Außenmaß*

*Z = ohne Schraubengewinde*

L1..... Siehe Bilder.

D1..... Siehe Bilder.

D2..... Siehe Bilder.

B1..... Siehe Bilder.

B2..... Siehe Bilder.

TA..... Drahtart.

Pm..... Metrisches Maß.

Pi..... Zollmaß.

RH/LH..... Rechter oder linker Draht.

L2..... Drahtlänge.

SMP..... Schmiernippel:

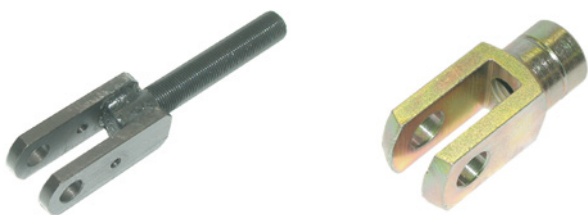
*G = ohne Schmiernippel*

*V = Schmiernippel vorgesehen*

*A = mit Schmiernippel*

## TYPEN

**Typ A**  
Gabelende ohne Rille



**Typ B**  
Gabelende mit Rille



**Typ C**  
Drahtende ohne Rille



**Typ D**  
Drahtende mit Rille



**Typ E**  
Kugel





# ABMESSUNGEN

